



*Celebrating* **100** YEARS  
of Research for the *Growing World*

# BARC History: Bureau of Animal Industry

**Rob Griesbach**

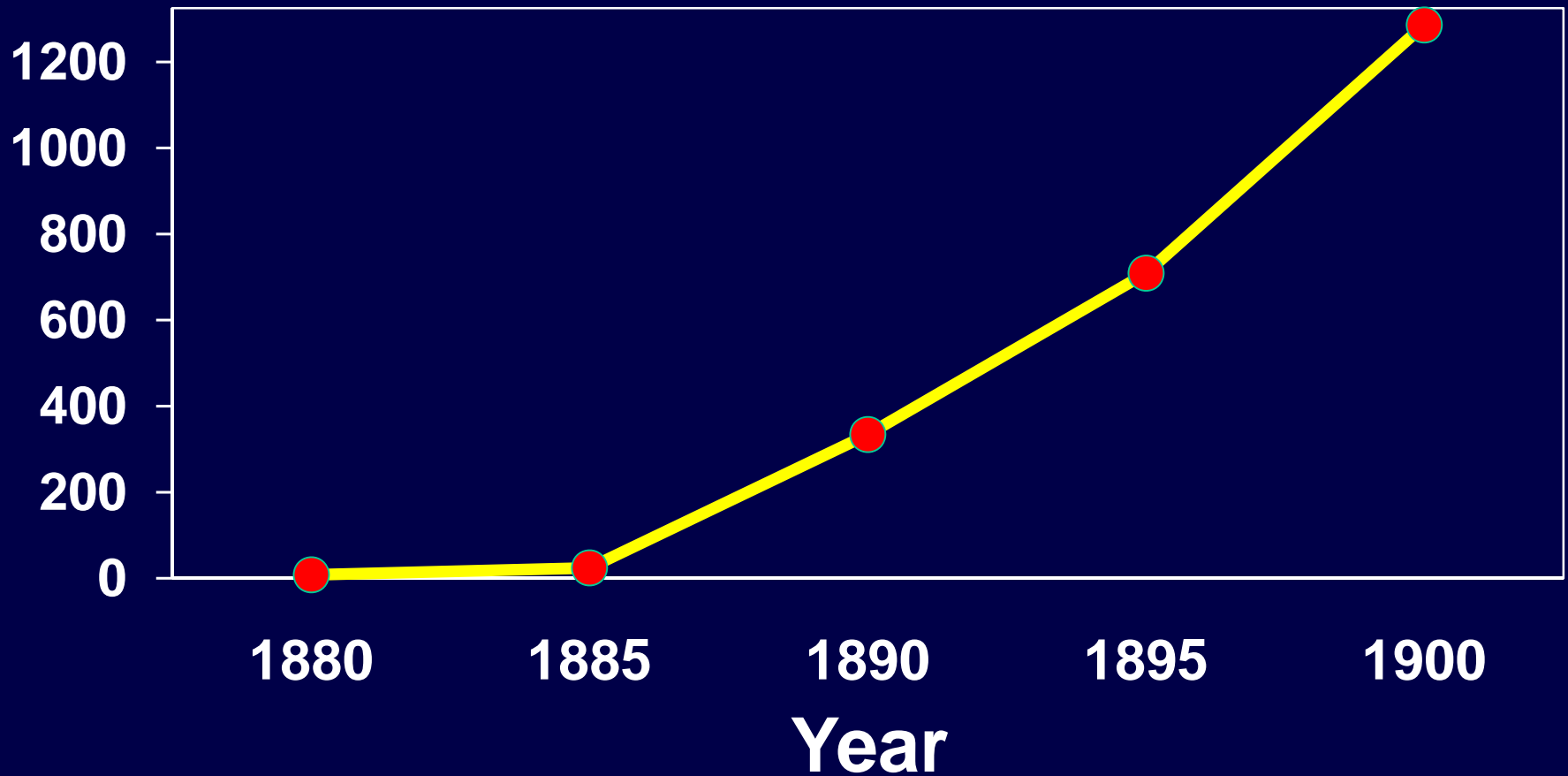
# **History & Growth Bureau of Animal Industry (BAI)**

**From 1862 to 1900, the primary mission of the USDA was to acquire & diffuse information.**

**Several new Divisions in animal sciences were established to facilitate the mission.**

<b>1868</b>	<b>Veterinarian</b>
<b>1871</b>	<b>Microscopy</b>
<b>1878</b>	<b>Animal Diseases</b>
<b>1884</b>	<b>Bureau of Animal Industry</b>
<b>1885</b>	<b>Ornithology &amp; Mammalogy</b>
<b>1891</b>	<b>Meat Inspection</b>
<b>1895</b>	<b>Dairy</b>

**With an expanded program,  
the number of employees involved  
in animal related activities grew**



# Meat Inspection

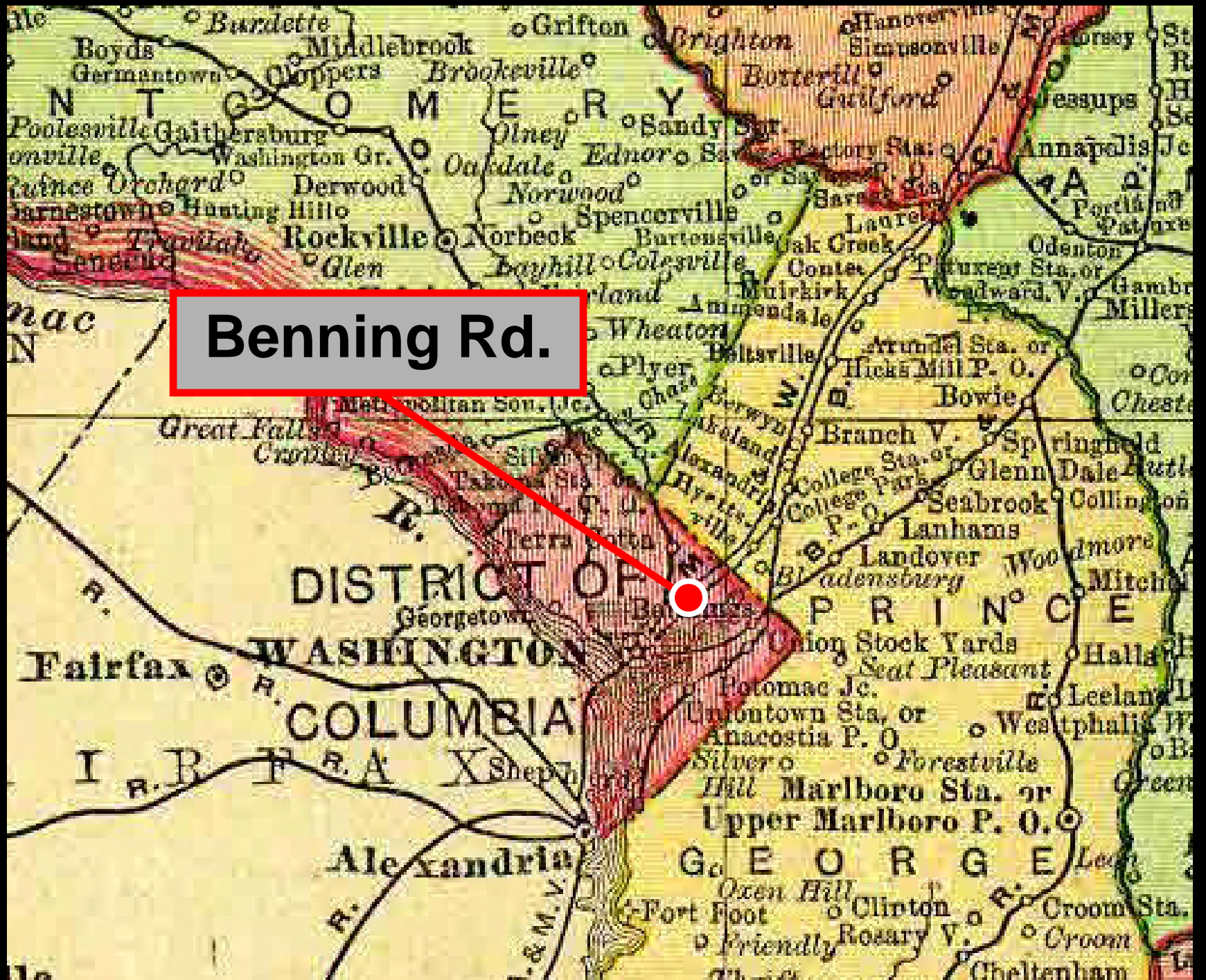


1884

**BAI leases land on  
Benning Road in  
Washington to build  
Veterinary Experimental  
Station**



**Benning Rd.**







GRACELAND  
CEMETERY

BENNING'S  
RR

COOL SP. R.R.

JEAN  
AVE

LINCOLN  
AVE

ST.  
ANNE

26

27

28

29

30

31

# Veterinary Experimental Station











# Veterinary Experimental Station is now: Rosedale Park



1897

**BAI moves to larger  
facility in Bethesda, MD**

Bethesda Experiment  
Station

A historical map of the Washington, D.C. area, showing the District of Columbia and surrounding regions. The map is color-coded with various shades of green, yellow, and red. A red box with a white border is superimposed on the map, containing the text "Bethesda, MD". A red arrow points from the box to a red dot on the map, which is located in the area of Bethesda, Maryland. The map shows various towns, roads, and the Potomac River. The District of Columbia is labeled "DISTRICT OF COLUMBIA" and "WASHINGTON". Surrounding areas include "FAIRFAX", "ALEXANDRIA", "PRINCE GEORGE", and "MONTGOMERY".

**Bethesda, MD**









# Bethseda, MD

**1897** 18 acres leased

**1899** 2 acres bought

**1902** 20 acres bought

**1907** 60 acres leased









# 1909 Male Zebra-Ass hybrid





# Bethesda Experiment Station now: Norwood Park Recreation Center







1900

**Secretary of Agriculture,  
James Wilson,  
reorganizes USDA to  
expand research program**

# 1902

**Bureau of Plant Industry**

**Bureau of Entomology**

**Bureau of Soils**

**Bureau of Statistics**

**Weather Bureau**

**Division of Publications**

**Office of Experiment Stations**

**Division of Accounts & Disbursements**

**Bureau of Animal Industry**

**Bureau of Chemistry**

**Bureau of Biological Survey**

**Forestry Service**

**Office of Public Roads**

**Library**

**Expanding research program required  
expanded laboratory space  
Building Plan for USDA on the Mall**







A site plan of an agricultural campus. A central vertical corridor contains four main buildings, each highlighted with a black fill. Red lines connect these buildings to callout boxes on the right. The top callout box is labeled 'Agriculture Bldg.', the second 'Research Lab', the third 'Administration', and the bottom 'Research Lab'. To the right of the corridor are several other buildings, including a large oval-shaped structure and a complex of rectangular buildings. The plan is bounded by streets: '15th STREET' at the top, '10th STREET' on the left, 'B STREET NORTH' on the far left, and '14th STREET' at the bottom.

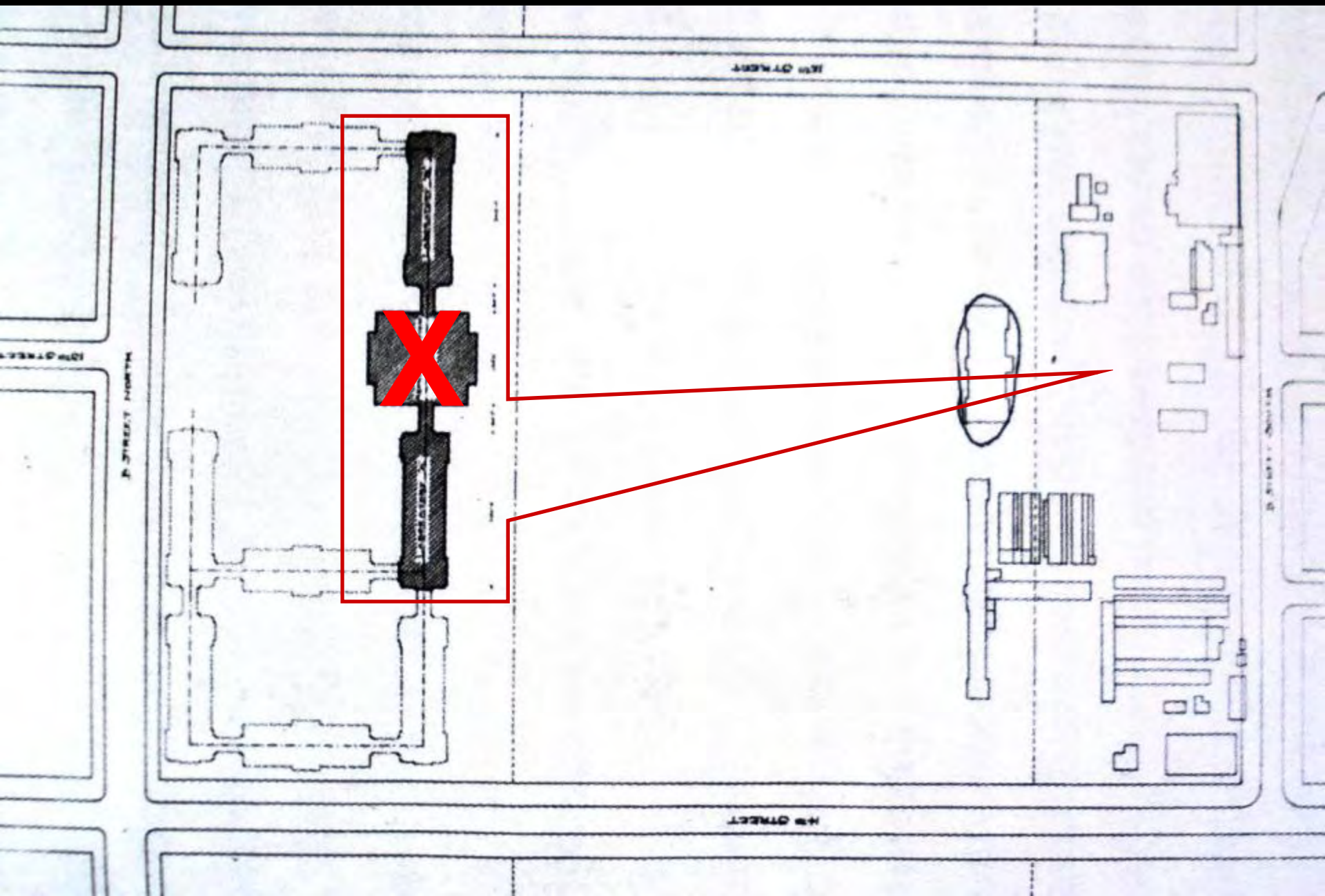
**Agriculture Bldg.**

**Research Lab**

**Administration**

**Research Lab**

**Congress modifies plan  
to remove the central  
administration building  
& locate the laboratory  
buildings off the mall**





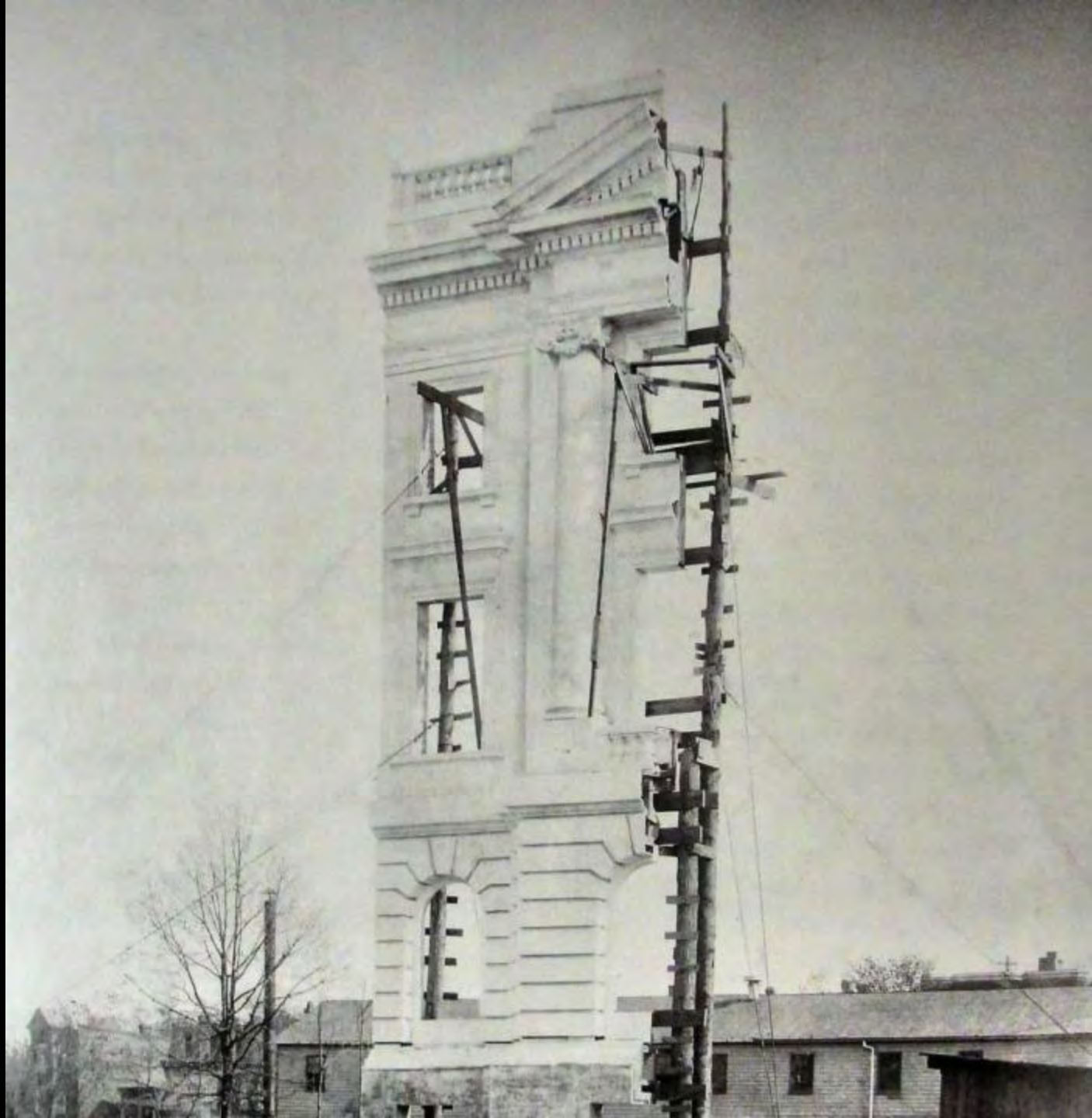
1908

Agriculture Bldg.



DEPARTMENT OF AGRICULTURE  
LABORATORY B.  
NO 57 APR 11 50 1908



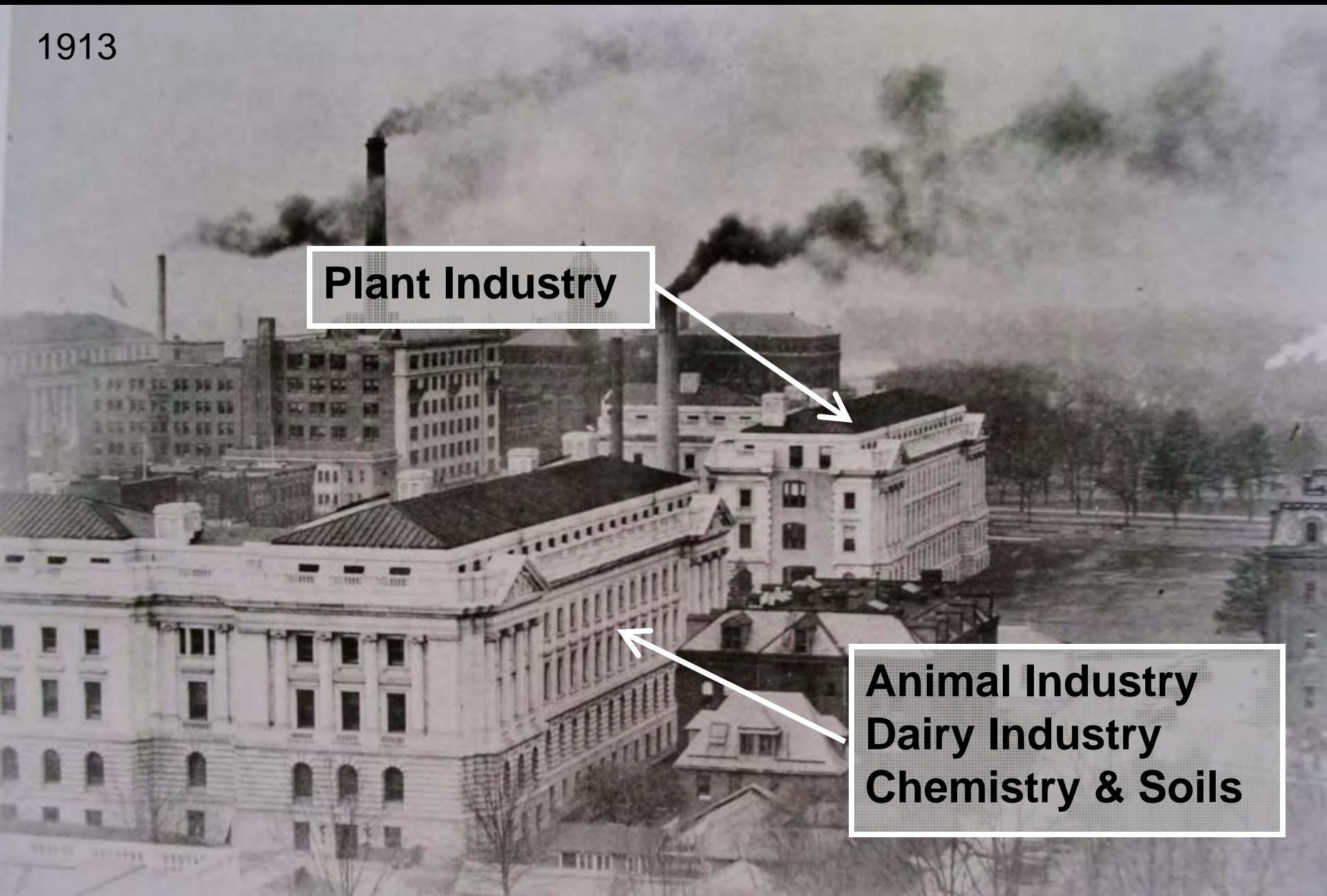




1913

**Plant Industry**

**Animal Industry  
Dairy Industry  
Chemistry & Soils**





# 1925 Bureau of Dairy Industry



# 1935 Bureau of Dairy Industry

